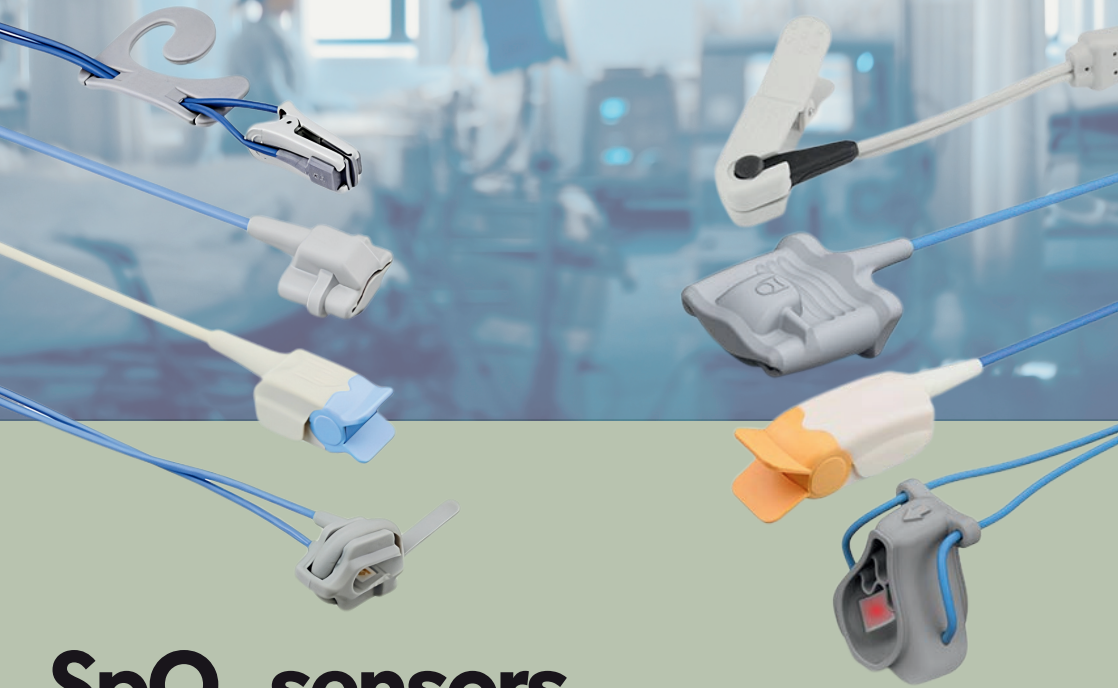
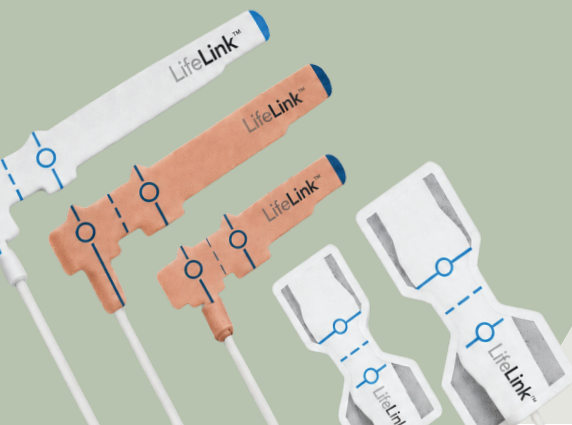


LifeLink™



SpO₂ sensors

For reliable oxygen saturation and pulse rate measurement



HUSK
HEALTHCARE
GROUP

Reliable monitoring, tailored to the patient and care situation

Reliable measurement of oxygen saturation and pulse rate is essential for effective patient monitoring. Pulse oximetry is a non-invasive method that allows peripheral oxygen saturation (SpO₂) and pulse rate to be monitored continuously or intermittently. The measurement is based on the absorption of red and infrared light by arterial blood and is widely used in operating rooms, intensive care units, recovery rooms, emergency departments, and general wards, among others.^{1 2}

The LifeLink™ SpO₂ sensors offer a versatile solution for this. The sensors have been developed for the non-invasive measurement of oxygen saturation and pulse rate, and are available in both disposable and reusable versions. This allows the right sensor to be selected for each patient, application, and care setting.

Our range includes sensors for various patient groups: adults, children, infants, and neonates. Depending on the version, the sensors are suitable for application on the finger, toe, foot, or ear. In addition, various designs are available, such as adhesive, non-adhesive, finger clip, soft tip, wrap, and multi-site sensors.

Disposable SpO₂ sensors

In situations where hygiene and patient safety are of particular importance, disposable SpO₂ sensors offer a practical solution. Because the sensor is used on a patient-specific basis, these sensors help limit the risk of cross-contamination. Disposable sensors are particularly suitable for long-term single-patient monitoring, isolation situations, neonatal care, and other applications where a clean, comfortable, and reliable attachment is important.



¹ World Health Organization / Lifebox (2011). Pulse Oximetry Training Manual. WHO Patient Safety Programme.

² Pretto, J.J., Roebuck, T., Beckert, L., Hamilton, G. (2014). Clinical use of pulse oximetry: Official guidelines from the Thoracic Society of Australia and New Zealand. *Respirology*, 19(1):38–46.

Reusable SpO₂ sensors

When sensors are used regularly and with multiple patients, reusable SpO₂ sensors can be an efficient and sustainable choice. These sensors are designed for multiple use and can be reused after proper cleaning and disinfection.

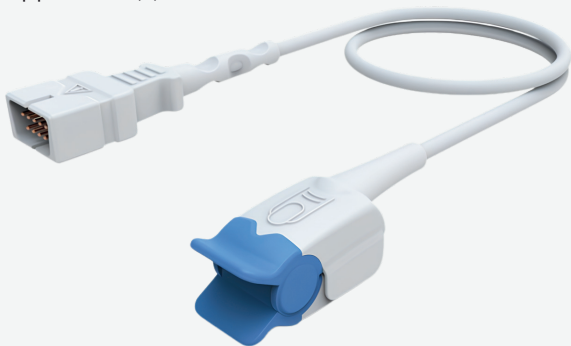
There is now ample evidence that reusable SpO₂ sensors are demonstrably more sustainable than disposable sensors, without compromising clinical reliability.³ For instance, a comparison of the Life Cycle Analysis of disposable and reusable sensors shows that a reduction of 75 to 85% in CO₂ impact can be achieved.⁴

For the reasons mentioned above, we carry an extensive range of reusable sensors: finger clip, silicone soft tip, silicone wrap, ear clip, and multi-site sensors are available. This ensures that there is a suitable reusable, more sustainable solution for various patient groups and measurement locations.

Compatible with common monitor platforms

A common challenge with SpO₂ sensors is finding the right compatibility with existing monitors and pulse oximeters. LifeLink™ SpO₂ sensors are available in versions compatible with many common systems, including Masimo, Nellcor, Philips, GE, Dräger, Mindray, Nihon Kohden, Nonin, and other platforms.

Thanks to the wide range, you do not need to search for a single standard solution, but can choose sensors that match the monitor(s) used, the patient group(s), and the specific application(s).



³ Stockert, E.W., Carvalho, B., Sun, E.C. (2024). A cost and waste-savings comparison between single-use and reusable pulse oximetry sensors across US operating rooms. *Anesth Analg.* 139(1):220-225.

⁴ Duffy, J., Slutzman, J.E., Thiel, C.L., Landes, M. (2023). Sustainable purchasing practices: a comparison of single-use and reusable pulse oximeters in the emergency department. *West J Emerg Med.* 24(6):1034-1042.

Key features of all LifeLink™ SpO₂ sensors

- Available in disposable and reusable versions
- Suitable for adults, children, infants, and neonates
- Available in many designs: adhesive, non-adhesive, clip, soft tip, wrap, and multi-site
- Applicable to various physical locations, such as finger, toe, foot, or ear
- Latex-free and designed with patient comfort in mind
- Compatible with various common monitor platforms
- Wide range of versions for different care situations

ORDER INFORMATION

We supply disposable and reusable SpO₂ sensors in a wide variety of designs and compatibilities. Because there are many brands and types of equipment (and therefore connections) worldwide, we only list the article numbers of the most common systems on the product page. Is your system not listed on the product page? Then please contact us for current ordering information and the correct sensor for your brand and type of monitor.

Scan this QR code to go to the product page:



LifeLink™

LIFELINK™ is a registered brand of **Husk Healthcare Group B.V.**

Interested?

Contact your local partner for more information, by scanning the QR code and selecting your country:

